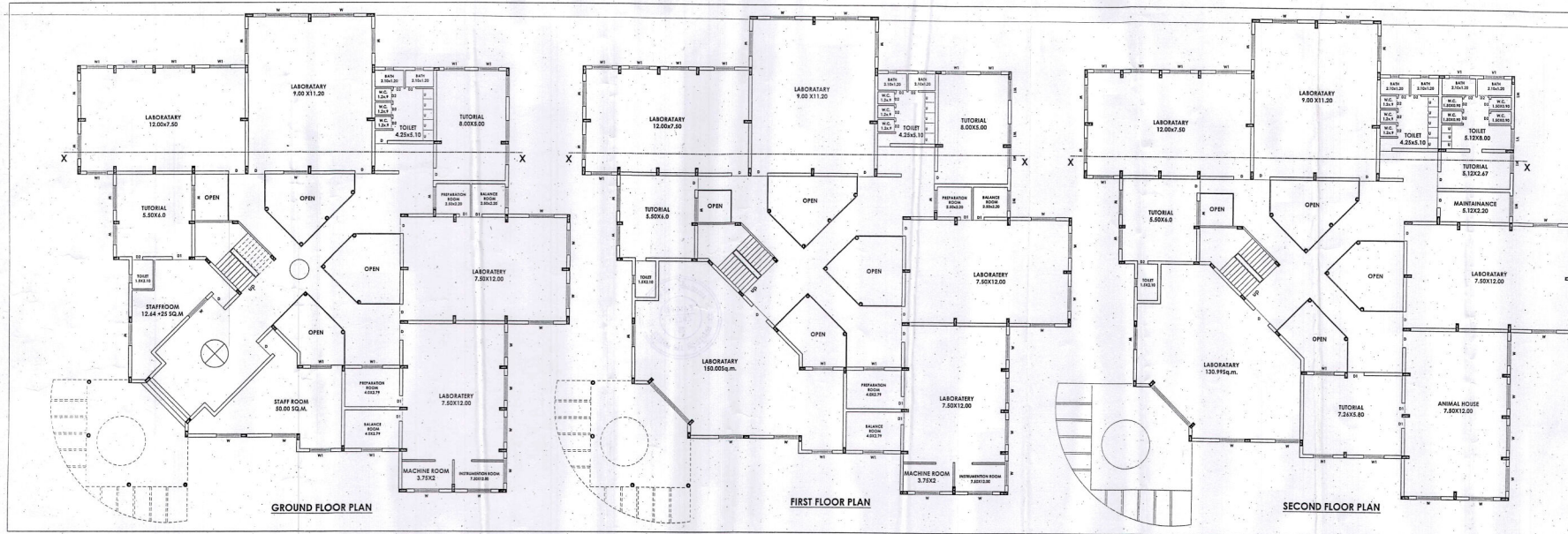


# FLOOR PLAN PHASE II



CARPET AREA CALCULATION	
<b>GROUND FLOOR</b>	
TUTORIAL	= 33.00 SQM
STAFF ROOM	= 150.00 SQM
TOILET	= 2.50 SQM
TOILET	= 34.00 SQM
TUTORIAL	= 42.94 SQM
LABORATORY	= 90.00 SQM
LABORATORY	= 150.00 SQM
LABORATORY	= 90.00 SQM
MACHINE ROOM	= 5.50 SQM
INSTRUMENTATION ROOM	= 5.50 SQM
MACHINE ROOM	= 7.50 SQM
INSTRUMENTATION ROOM	= 7.50 SQM
HOUSE KEEPING	= 10.00 SQM
CIRCULATION SPACE	= 146.33 SQM
FANTRY	= 10.04 SQM
<b>TOTAL</b>	<b>779.70 SQM</b>
<b>FIRST FLOOR</b>	
LABORATORY	= 75.00 SQM
MACHINE ROOM	= 7.50 SQM
INSTRUMENTATION ROOM	= 7.50 SQM
LABORATORY	= 90.00 SQM
TUTORIAL	= 42.94 SQM
TOILET	= 34.00 SQM
LABORATORY	= 100.80 SQM
LABORATORY	= 90.00 SQM
TUTORIAL	= 33.00 SQM
LABORATORY	= 151.16 SQM
MACHINE ROOM	= 5.50 SQM
INSTRUMENTATION ROOM	= 5.50 SQM
CIRCULATION SPACE	= 110.00 SQM
<b>TOTAL</b>	<b>724.12 SQM</b>
<b>SECOND FLOOR</b>	
ANIMAL HOUSE	= 90.00 SQM
LABORATORY	= 90.00 SQM
MAINTENANCE	= 11.24 SQM
TUTORIAL	= 13.47 SQM
TOILET	= 42.94 SQM
TOILET	= 34.00 SQM
LABORATORY	= 100.80 SQM
LABORATORY	= 90.00 SQM
TUTORIAL	= 33.00 SQM
LABORATORY	= 23.37 SQM
EXAM CONTROL ROOM	= 11.24 SQM
MAINTENANCE	= 74.47 SQM
COMPUTER CENTER	= 110.00 SQM
CIRCULATION SPACE	= 110.00 SQM
<b>TOTAL</b>	<b>781.18 SQM</b>
<b>CARPET AREA-GROUND FLOOR</b>	<b>779.70 SQM</b>
<b>CARPET AREA-FIRST FLOOR</b>	<b>724.12 SQM</b>
<b>CARPET AREA-SECOND FLOOR</b>	<b>781.18 SQM</b>
<b>TOTAL CARPET AREA</b>	<b>2284.41 SQM</b>

DWARAKA BAHUDESHIYA GRAMEN  
VIKAS FOUNDATION BUILDING  
PLAN SHOWING OF RAJARASHI SHAMU  
COLLEGE OF PHARMACY BUILDING  
(PHASE II) ON GUT NO.-29 SR NO. 08  
AT MALVHIR, TQ/DIST. BILGAVA

DETAILS OF FINISHES	
S. NO.	DESCRIPTION
1	100% T. & B.
2	100% T. & B.
3	100% T. & B.
4	100% T. & B.
5	100% T. & B.
6	100% T. & B.
7	100% T. & B.
8	100% T. & B.
9	100% T. & B.
10	100% T. & B.

JAYANT B. SONNEN  
ARCHITECT  
Vastu  
Sd/-  
DATE: 11/08/2018  
DWARAKA BAHUDESHIYA GRAMEN VIKAS FOUNDATION